

CELEBRATING THE *people* BEHIND THE *land*



2010
ANNUAL REPORT



CONTENTS

President's Letter	3
What We Do	4
Our Lands	6
Our Communities	8
Looking Forward	10
CLC Map	12
CLC Leadership	14
Chair's Letter	15
Donors	16
Financials	23



PRESIDENT'S LETTER

As we prepare Cascade Land Conservancy's Annual Report each year, a perplexing challenge always looms. How do we report on the past year when our mission, our work and our success are measured in a time scale that ranges from decades to perpetuity? I resolve this challenge in my own mind by looking at our recent accomplishments and the big job ahead through the lens of the enduring values behind our work: A deep understanding of our communities and citizens across the region, longevity and persistence of effort and fairness.

A thorough understanding of our communities is at the foundation of each project reported between the covers of this report and is critical to our work in the years to come. The character, dreams and ambitions of our communities shape our understanding of which landscapes need to be conserved and how to make our region livable. The Cascade and Olympic Agendas are a summation or mirror of these aspirations for our region and we succeed because our work is fundamentally a continuation of this jointly held vision.

This deep identity of Cascade Land Conservancy with each of the communities we serve is a necessary beginning, but it is only a beginning. Turning this unity of vision into reality requires organizational longevity and indefatigable persistence to see a project through. Several accomplishments we report for 2010 have taken more than a decade to achieve, most notably the Maury Island project. We have an ingrained axiom at Cascade Land Conservancy: Every project that is truly transformational seems to expire several times over before it is successful. We simply do not give up until we find a way to succeed.

Another core value behind our work to implement The Cascade and Olympic Agendas is a firm and clear sense of regional fairness. With this spirit of equity, we strive for all to get a fair shake with rural businesses and citizens working together. At its root, our work is game changing because it recognizes if one falls we all fall. The whole is very much greater than the sum of the parts.

While this report is about just one year of our work, it illustrates projects that are both examples and the result of the enduring values fundamental to The Cascade and Olympic Agendas. These same values of connection with our communities, persistence and longevity and fairness across our region will guide our work in the decades to come.



A handwritten signature in black ink, appearing to read 'Gene Duvernoy'. The signature is fluid and cursive, with a long horizontal line extending to the right.

Gene Duvernoy, President

WHAT WE DO



Cascade Land Conservancy fills a unique and important niche as the largest conservation and community building organization dedicated solely to this region. As a national leader, CLC is shaping a future that will flourish environmentally and economically. We partner with thousands of leaders and residents across the region to create healthy, livable and prosperous communities. For over 20 years, CLC has led efforts to conserve more than 172,000 acres of forests, farms, shorelines, parks and natural areas and restore critical landscapes.

We are advancing an innovative new approach to conservation that encourages collaboration across all sectors and balances environmental, social and economic needs. The Cascade and Olympic Agendas are our roadmaps for the future.

THE CASCADE AGENDA

The Cascade Agenda is a 100 year vision and immediate action plan for the lands and communities of our region. It is based on the input of thousands of residents across our region and offers pragmatic solutions to the challenges and opportunities created by our tremendous population growth. The Cascade Agenda's collective vision is grounded in the belief that a broad coalition can achieve fundamental change. The Cascade Agenda brings together business, civic and government leaders to conserve 1.3 million acres and create vibrant and livable communities.

Since the Cascade Agenda was launched in 2005, the broad coalition has conserved 188,00 acres.

THE OLYMPIC AGENDA

The Olympic Agenda is an emerging collaboration with the residents of the Olympic Peninsula to shape a future of great communities and healthy landscapes. CLC is working with residents, organizations and businesses of the Peninsula to ensure that our working lands and rural economy continue to thrive, our communities grow in a sustainable fashion and quality of life is maintained over the next 100 years. Drawing on the experience of creating The Cascade Agenda, CLC will identify and help implement strategies that will provide a non-regulatory guide for conservation and community growth.



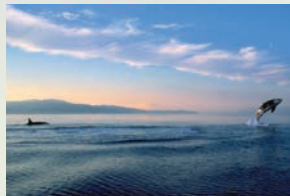
OUR LANDS

During the past 21 years, CLC has conserved over 172,000 acres, from small community parks to working lands spanning tens of thousands of acres. Once our precious lands are conserved, they need continual monitoring, restoration and stewardship. We are responsible for caring for over 12,000 acres across the region. In 2010, we had many great successes that demonstrate our ability to convene disparate stakeholders, leverage diverse funding sources and find solutions that benefit not only our natural environment but our communities and economy as well. None of this work would be possible without the support and partnership of volunteers, landowners, government agencies, businesses and non-profit organizations.

CONSERVATION

MAURY ISLAND

For over a decade, the future of the Maury Island gravel mine remained in limbo. After years of negotiations and continual dead ends, CLC, the State of Washington, King County and the environmental community successfully conserved 235 acres protecting a critical ecosystem for wildlife and people alike. Along with King County's 320-acre Maury Island Marine Park just north of the property, the two sites will represent the largest public holding of protected marine shoreline in all of Puget Sound.



DEVIL'S HEAD

In July of 2010, CLC, Pierce County and a coalition of conservation partners protected 94 acres at the tip of the Key Peninsula, including one mile of shoreline. The land thrives from a diverse environment of forested and aquatic habitats, and will become a county park for all residents to enjoy and experience the outdoors. It will also become an important link in both the planned Head-to-Toe Trail stretching 20 miles along the Key Peninsula and the Cascadia Marine Trail, a water route used by kayakers, day sailors and other boaters from the Canadian border to Olympia.



COPALIS RIVER GHOST FOREST

In partnership with Washington State Parks, CLC conserved 122 acres of marsh, riparian habitat and forest along the lower Copalis River in Grays Harbor County. This unique landscape is the result of a massive tsunami and earthquake that struck the area in 1700 and has become subject to a considerable amount of scientific research. Some of the tree snags in the marsh are 700 to 800 years old.



I-90 WILDLIFE CORRIDOR ADDITIONS

CLC conserved an additional 262 acres of forest and riparian lands along the I-90 corridor as part of the Department of Transportation Wildlife Bridges project. The conservation of these lands adds to 1000 acres previously conserved in this area, providing critical habitat and connectivity for wildlife migration. The results of this project will benefit Northern Spotted Owls, Marbled Murrelets, Canada Lynx, Grizzly Bears and Gray Wolves.



HOQUIAM RIVER SURGE PLAIN

CLC and Rayonier Forest Resources conserved a 186-acre tract on the east fork of the Hoquiam River. This acquisition is part of a partnership between a half dozen organizations, government agencies and elected officials that has resulted in the conservation of more than 1,124 acres of forested wetlands and several miles of riverfront of the Hoquiam River Surge Plain flowing into Grays Harbor Estuary.



NORTH FORK OF STILLAGUAMISH RIVER

The Stillaguamish Tribe and CLC conserved 233 acres of riverfront, forests and wetlands along the North Fork of the Stillaguamish River. This stretch of the river contains important spawning habitat for Chinook salmon in the Stillaguamish River Basin. The Stillaguamish Tribe will conduct in-stream restoration to enhance this critical habitat and continue to steward these lands in perpetuity.



RESTORATION

QUEETS RIVER KNOTWEED REMOVAL

In 2007, CLC conserved this 45-acre estuary at the mouth of the Queets River on the Pacific Coast of Jefferson County. The Queets River is one of the few rivers in the U.S. which is undammed and undiked from its headwaters to its mouth. For three years, CLC has been tackling 6 acres of invasive knotweed, reducing it to 1.5 acres in 2010, and replanting 2 acres on the riverbank to prevent erosion. The property is used by migratory birds, elk and deer and streamside restoration will improve water quality and habitat.



CEDAR RIVER RESTORATION

CLC has an ongoing partnership with Seattle Public Utilities, King County, Friends of the Cedar River Watershed and the larger watershed community to restore riparian ecosystems on the lower Cedar River on both public and private property. The Cedar River Watershed contains a majority of the best remaining aquatic habitat in the Lake Washington ecosystem, but is heavily impacted by habitat degradation. In 2010, CLC and our partners treated four river miles and approximately 40 acres of invasive knotweed, installed native plants demonstrating best practices, formed 15 partnerships with private landowners and hosted 16 volunteer events with over 600 volunteers.



In addition to this work, CLC also partners with Seattle Public Utilities in reforestation efforts on a majority of the remaining watershed. This work is critical to the health of the region. The efforts are within the City of Seattle's Cedar River Municipal Watershed, which provides drinking water to 1.45 million people in Seattle and surrounding areas, linking the work of environmental restoration to public health. In 2010, with the help of thousands of volunteers, we planted thousands of trees and shrubs continuing the improvement of this important watershed.



The people behind the land.

Conserving land is only the first step. Our protected lands need continual monitoring, restoration and stewardship. CLC mobilizes tens of thousands of volunteers every year to restore and steward the lands we have worked so hard to protect. From our dedicated Land Stewards to elementary school students, the community that makes up the volunteer force at CLC is invaluable.

In 2010, with the help of many volunteers, we accomplished several major and transformational projects. At the Maxine G. Morse Nature Conservancy property in Pierce County, 2 new miles of trails were cleared, creating more opportunities for environmental education. Native species were planted along the shores of the Clover Creek Preserve to improve water quality and wildlife habitat. Volunteers removed knotweed on the Union River Preserve on Hood Canal and continued to control invasive species. Land Stewards around the region continued to monitor and restore CLC-managed lands. Their commitment to long-term stewardship also included organizing volunteer restoration events, documenting threats and acting as ambassadors to neighboring communities.

Volunteers are the backbone of Cascade Land Conservancy's efforts to care for the mountains, forests and streams that we conserve throughout the Pacific Northwest. The collective strength of our volunteers combined with CLC's knowledge and approach provides us the ability to do the work we do.

OUR COMMUNITIES

CLC recognizes that by creating great communities where people choose to live, we can protect rural working and natural lands from sprawling development. We work with leaders and residents to make our cities and towns great places to live, work and raise our families. Leading a network of cities and counties to advance strategies for managing growth, we are cultivating economic development and fostering a sustainable future. We also empower and mobilize tens of thousands of residents to make lasting change in their communities, from advancing public policy to volunteering in local parks.



GREEN CITY PARTNERSHIPS

CLC's Green City Partnership Program develops public-private partnerships with municipalities to build community-based stewardship programs for forested parklands, natural areas, and community open spaces. The programs galvanize residents, strengthen our communities and improve our quality of life by connecting people to nature and their neighbors.

Green Kent finalized its 20-year plan for the program with the City Council.

Green Kirkland engaged more than 2,000 volunteers planting more than 3,000 native plants.

Green Redmond enrolled over 40 new acres in restoration with nearly 3,000 volunteer hours.

Green Seattle held nearly 1,000 volunteer events and planted over 40,000 trees and shrubs.

Green Tacoma hosted its 3rd annual Green Tacoma Day with over 450 volunteers at 16 sites across the city.

GREEN CITIES RESEARCH ALLIANCE

CLC is participating in a collaborative research effort with the US Forest Service, the University of Washington, the City of Seattle, King County, EarthCorps and other environmental groups to understand volunteer experiences, measure urban forest structure and increase public awareness of the benefits of urban forest restoration. The results of this research will help communities make decisions about land use as well as understand the benefits and costs of urban green spaces.

PEARL JAM PARTNERSHIP

CLC partnered with Pearl Jam to mitigate the band's carbon emissions from their 2009 world tour. Together we are restoring 33 acres of forests in Kent, Kirkland, Redmond and Seattle through our Green City Partnerships.



COMMUNITY STEWARDS

CLC's Community Stewards program is training citizen leaders to mobilize, educate and train other community volunteers to become powerful voices for creating communities that better serve our families. CLC is providing the education and tools residents need to become more involved in the civic processes that decide our region's future. We currently have Community Stewards programs in six cities.

Edmonds Stewards continued to actively support a Complete Streets policy, encouraging their city to create roads that are better designed and safer for drivers, transit users, pedestrians and bicyclists.

Issaquah Stewards have been organizing and advocating for smart growth, conservation, bike/pedestrian infrastructure and affordable housing in the Central Issaquah 30-year Plan.

Kirkland Stewards have been actively advocating for the proposed South Kirkland Park & Ride Transit Oriented Development.

Shoreline Stewards have been engaging the citizens in a conversation about a Complete Streets policy.

Tacoma Stewards organized a Community Summit that led to the creation of four new community gardens.

Tukwila Stewards partnered with refugees from Burma, Bhutan and Somalia, teachers and students from Foster High School and the St. Thomas Food Bank to create a community garden.



CASCADE AGENDA CITIES

CLC works closely with our Cascade Agenda member cities to ensure that these cities are vibrant and healthy. In addition to quarterly member city meetings, the City Leaders Group, which includes Mayors, City Managers, Administrators and Planning Directors, meets regularly to collaborate about implementing The Cascade Agenda at the local level. CLC will continue to use these venues to advance our four priority areas: neighborhood centers, innovative housing, streets for people and natural spaces.

- The Cascade Agenda Cities program grew to 18 cities, representing almost 1.4 million Puget Sound area residents and focused efforts on advancing policies and plans that are derived from The Cascade Agenda.
- CLC's Cascade Agenda Cities Program convened a group of City Leaders, consisting of City Managers/ Administrators and Planning Directors from around the region to understand the tools and financing options that were needed to create great communities. This group was invaluable in shaping legislation that will ultimately conserve working farms and forests while providing cities the infrastructure funding needed to improve sidewalks, streetscapes, provide open space and create thriving neighborhoods.
- A unique consortium led by Puget Sound Regional Council was awarded a \$5 million Sustainable Communities Regional Planning Grant from the U.S. Department of Housing and Urban Development. This funding will enable the region to plan for equitable transit communities along existing and planned high capacity transit corridors. CLC will have an active role in implementation, focusing on engaging diverse communities in station areas and reaching out to local elected officials and communities to build support for policies that support the plan.

LOOKING FORWARD

In 2010, Cascade Land Conservancy and our many partners conserved some of our region's most precious landscapes and improved communities for millions of residents. Our successes give us much to celebrate but there is still a great deal more to do. Our shared challenges of a growing population and the risk of jeopardizing our quality of life are still imminent. We must continue to work together to find solutions that will truly serve future generations.

In the coming years, CLC will continue to advance The Cascade and Olympic Agendas through partnerships that use innovative approaches to conservation and community building. Together we will bring these long-term visions and realistic solutions to the forefront of our region's future. The opportunities on the horizon are promising and will require persistence and tenacity to see them through; CLC will forge ahead with these ongoing projects while seeking new ventures along the way.

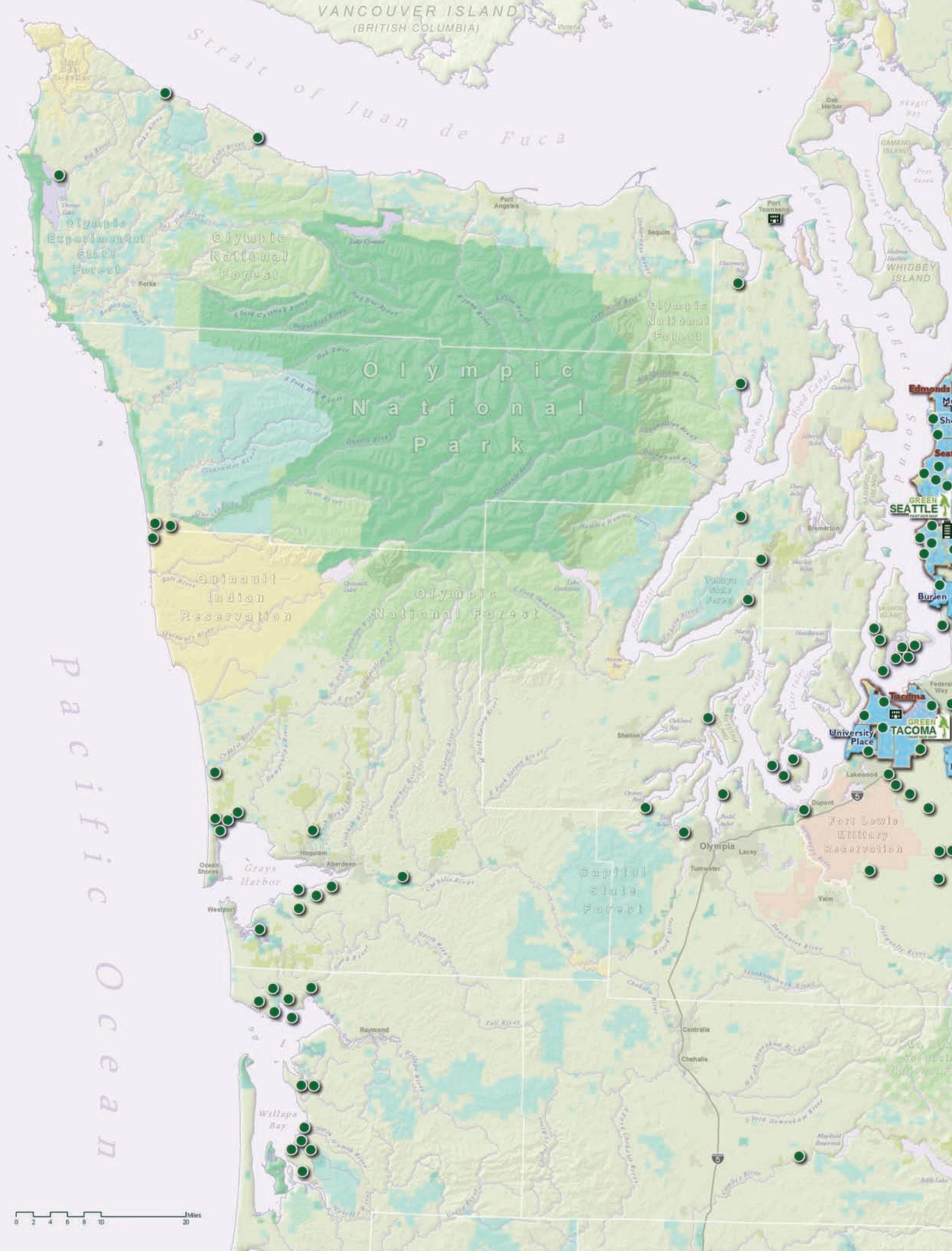
Creating great communities is an essential piece in shaping a future worthy of our children and grandchildren. CLC will continue to improve our communities by engaging residents in several ways. Our Green City Partnerships Program will empower citizens to restore the green spaces that provide natural havens close to urban homes. We will continue mobilizing residents to create change in their neighborhoods, whether it be shaping policies that impact how their city or town manages a growing population, or creating community gardens in underserved communities. We will continue to engage city leaders from across the region in advancing a regional approach to growth that cultivates economic development and fosters a sustainable future.

Conserving our region's most precious landscapes is critical to maintaining our quality of life. CLC will advance conservation projects that exemplify the beauty and breadth of our region. Our work on the Yakima River Canyon Scenic Byway Initiative will restore Washington State's first scenic byway, making 22 miles of highway a destination for residents and tourists to enjoy one of the most breath-taking routes in the state. We will continue to work with our region's farmers and foresters to protect our quintessential resource lands that provide us all clean air and water; rural jobs, locally grown food and unparalleled places to recreate and enjoy nature. We will be relentless in pursuing cutting-edge conservation strategies, including the Landscape Conservation and Local Infrastructure Program that will link the future of our communities with the conservation of our rural landscapes.

The gains that CLC has seen over the last year, as well as the aspirations of our future projects speak to the bold vision we have for our region. Each partnership we engage in moves us closer to becoming a region that is responsive to our shared challenges and opportunities. The future of our resource lands, cities and wild places rests in the decisions we make today.



From the lush rainforests on the Olympic Peninsula to the green urban spaces in Central Puget Sound to the rolling sage hills east of the mountains, our natural beauty surrounds and defines our way of life. These breathtaking landscapes are intrinsically linked by the people that choose to call this region home and make the Northwest one of the best places to live. Our values and dedication to our lands and communities embodies the spirit of our region and are evident in our actions to create a better future for our families. CLC's work embraces these communities and the link we all share between our vibrant cities and beautiful rural land. We all have a role to play in forming a future worthy of our children and grandchildren. Please join us by learning more, volunteering and becoming a CLC member. The power to shape the future comes from you.



VANCOUVER ISLAND
(BRITISH COLUMBIA)

Strait of Juan de Fuca

Olympic Experimental State Forest

Olympic National Forest

Olympic National Forest

Olympic National Park

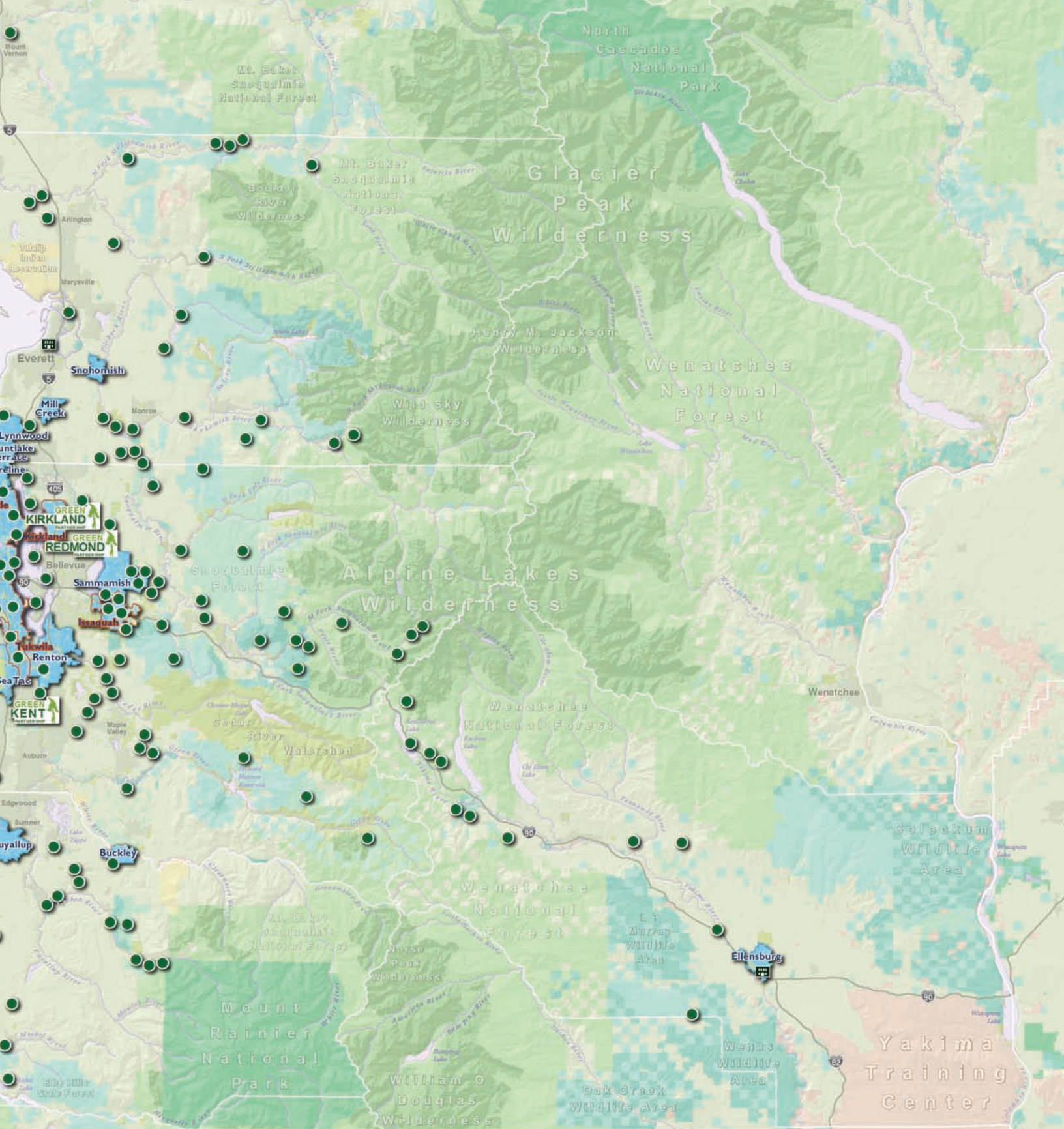
Quinault Indian Reservation

Olympic National Forest

Capitol State Forest

Pacific Ocean

0 2 4 6 8 10 20 Miles




Cascade Land Conservancy

- Conserved Property
- Green City Partnership
- Cascade Agenda Member City
- Cascade Agenda Leadership City
- Main Office
- Satellite Office

- Interstate Highway
- Stream or Waterbody
- City or Town
- Land Ownership**
- National Wilderness Area
- National Monument, Park or Wildlife Refuge
- National Forest
- Other Federal Agency Land, Departments of Defense and Energy and Bureau of Land Management and Reclamation
- Indian Reservation or Other Native American Tribal Land
- State Conservation Land, State Park, Wildlife Area, NAP or NRCA
- Other State Land
- County or Municipal Agency
- Private Conservation Land



cartography by
Cascade Land Conservancy
 December 31, 2010



Indian Reservation

CASCADE LAND CONSERVANCY LEADERSHIP

2011 BOARD OF DIRECTORS

Peter Orser, Chair, Weyerhaeuser Real Estate Company
Jim Greenfield, Vice Chair, Davis Wright Tremaine
Bruce Williams, Treasurer & Immediate Past Chair, HomeStreet Bank
Patti Case, Secretary, Green Diamond Resource Company
Jim Armstrong, Howe and Armstrong Consulting
Rob Bernard, Microsoft Corporation
JJ Collins, Freestone Real Estate LLC
Gene Duvernoy, CLC President
Nicole Faghin, AECOM
Daniel Friedman, UW College of Built Environments
Bert Gregory, AIA, Mithun Architects, Designers, Planners
John Howell, Cedar River Group
Terry Mutter, The Boeing Company
Ken Myer, UW, Center for Commercialization
Greg Nickels, Former Mayor of Seattle
Thomas O'Keefe, River Advocate
Frank Pritchard, Open Space Advocate
Natalie Quick, The Fearey Group
Floyd Rogers, Open Space Advocate
Joe Sambataro, Jr., True Blue Inc.
Bill Taylor, Taylor Shellfish
Dave Towne, Towne Planning Services
Doug Walker, WRQ Founder
Andy Wappler, Puget Sound Energy
Debbie Young, Tacoma Public Utilities

COUNCIL OF ADVISORS

Gerry Johnson, Partner, Pacifica Law Group
Ken Alhadeff, Eltetas Enterprises
Phil Barrett, Private Investor
Gene Duvernoy, CLC President
Bob Drewel, Puget Sound Regional Council
Mike Garvey, Saltchuk
Nick Hanauer, Second Avenue Partners
Bruce Hosford, Hosford Ventures
John Howell, Cedar River Group
Carol James, Open Space Advocate
Brian Janssen, Onyx Founder
Judd Kirk, Port Blakely Communities
Martha Kongsgaard, Kongsgaard Goldman Foundation
John McCoy, Tulalip Tribes
Denny Miller, Denny Miller Associates Inc.
Dan Nordstrom, Outdoor Research
Bill Pope, Mazama Country Inn
Ron Sher, Terranomics Development
Herb Simon, Simon Johnson LLC
David Skinner, ShadowCatcher Entertainment
Greg Smith, Urban Visions
Maryanne Tagney Jones
Craig Ueland, Former President and CEO, Russell Investment Group
Bob Wallace, Wallace Properties

CASCADE AGENDA LEADERSHIP TEAM

J. M. Allen, Managing Member, Allen & Company, LLC
Sam Anderson, Executive Officer of the Master Builders Association of King and Snohomish Counties
Ernesta Ballard, Senior Vice President, Corporate Affairs, Weyerhaeuser Company
Charley Bingham, Sustainable Forestry Advocate
Bruce Blume, Chairman and CEO, The Blume Company
Rod Brown, President, Washington Environmental Council
Patrick Callahan, Founder and CEO, Urban Renaissance Group, LLC
Phyllis Campbell, Pacific Northwest JP Morgan & Chase
Bob Drewel, Former Snohomish County Executive
Rick Dunning, Executive Director, Washington Farm Forestry Association
Gene Duvernoy, President, Cascade Land Conservancy
Joni Earl, CEO Sound Transit
Billy Frank, Jr, Chairman, Northwest Indian Fisheries Commission
Jerry Franklin, Program Director, College of Forest Resources, University of Washington
Jay Gordon, Executive Director, Washington State Dairy Federation
Stone Gossard, Pearl Jam, Community Leader
Denis Hayes, President and CEO, Bullitt Foundation
Ada Healey, Vice President of Real Estate, Vulcan Real Estate
John Howell, Partner, Cedar River Group
Sally Jewell, President and CEO, REI
Gerry Johnson, Partner, Pacifica Law Group
Kate Joncas, President, Downtown Seattle Association
Ron Judd, Public Policy Advisor
Martha Kongsgaard, Chair, Puget Sound Partnership; President, Kongsgaard-Goldman Foundation
Colin Moseley, Chairman and President, Green Diamond Resource Co.
Steve Reynolds, Former Chairman, President, CEO, Puget Sound Energy
Norman Rice, Vice Chairman of Capital Access, Former Mayor of Seattle
John Rindlaub, CEO, Wells Fargo, Pacific NW Region
Charles Royer, President, Institute for Community Change, Former Mayor of Seattle
Bill Ruckelshaus, Former Chair, Puget Sound Partnership, Former EPA Administrator
Bob Santos, Former Executive Director Interlm & Former Regional Director HUD
Ron Sher, Metrovation
DeLee Shoemaker, State Government Affairs Director, Microsoft Corporation
Maryanne Tagney Jones, Immediate Past Chair, Cascade Land Conservancy
David Thorud, Dean Emeritus, College of Forest Resources, University of Washington
Craig Ueland, Former President and CEO, Russell Investment Group
Tay Yoshitani, CEO, Port of Seattle

KING COUNTY TRUSTEES

Thomas O'Keefe, Chair
Brooke Alford
Mark Boyar
Crystal Carter
Caroline Corcoran
Wally Costello
Kristi Dranginis
Nona Ganz
Jim Greenfield
Carolyn Hope
Craig Krueger
Doug McClelland
Harry Morgan
Dave Russell
Chuck Wolfe
Janet Wall

KITTITAS COUNTY TRUSTEES

Jim Armstrong, Chair
Jim Briggs
Deborah Essman
Kirk Holmes
Jim Huckabay
Jeff Jones
Kelly Larimer
Greg Lutovsky
Wayne Quirk
Chris Schmidt
Jason Smith
Tami Walton

OLYMPIC PENINSULA TRUSTEES

Patti Case, Chair
Kris Boyle
Jean Farmer
Emily Garlich
Bob Hager
Tom Hamilton
Terri Jeffreys
Brian McGinnis
Dan O'Neal
David Overton
Dawn Pannell
Gerry Ring-Erickson
Bob Simmons
Bill Taylor

PIERCE COUNTY TRUSTEES

Ione Clagett, Interim Chair
Dominic Accetturo
Bruce Beckett
Katrina Bloemsmas
Lloyd Fetterly
Pat Fetterly
Tom Galdabini
Ron Hendry
Lara Herrmann
Kris Kauffman
Chelsea Levy
Nancy Pearson
Dave Seago
Monty Smith
Herb Stumpf
Anna Thurston
Aaron Toso
Debbie Young
Allen Zulauf

SNOHOMISH COUNTY TRUSTEES

Nicole Faghin, Chair
Candy Castellanos
Sean Edwards
Jay Goodwin
Stephanie Hansen
Linda Neunzig
Allison Raduziner
Paul Roberts
Scott Schreffler
Reid Shockey
DJ Wilson

CHAIR'S LETTER

The successes of 2010 are a culmination of Cascade Land Conservancy's extraordinary work in areas that go well beyond "conservation." A long-term vision, broad perspective and a relentless focus on execution drive us toward a region that we can truly say is the best place to live, work and play. Partnership and collaboration, ingenious and creative solutions, and economically based market strategies, are just some of the key elements that make our work successful.



Maury Island and Devil's Head, two significant projects for the health of Puget Sound, were true collaborations between many partners across the spectrum; private businesses, non-profit organizations and community advocates. Our restoration on land ranging from estuaries on the coast to urban forests continues to demonstrate that expert knowledge and persistence are required to restore some of our most precious ecosystems. Our city programs consider not just the needs of today's residents but also complete solutions for tomorrow's communities. As an organization that reaches across the entire region, Cascade Land Conservancy has found unique ways to engage these individual communities that make this area so vibrant. By building a regional perspective one community at a time with a long term view of the future and sheer tenacity we have made 2010 a success and believe this unique model will continue to bear fruit well into the future.

A handwritten signature in black ink, appearing to read "Peter Orser".

Peter Orser, Board Chair

CASCADE AGENDA CAMPAIGN

In May of 2010, the Cascade Agenda Campaign successfully reached its \$20 million goal in support of the Cascade Agenda. We would like to thank the following donors for their generous contributions to the Campaign.

\$1,000,000 and above

Bullitt Foundation
Nick and Leslie Hanauer
at The Seattle Foundation
Tagney Jones Family Fund
at The Seattle Foundation
Wildlife Forever Fund

\$500,000 to \$999,999

Anonymous (2)
The Boeing Company
The Norcliffe Foundation
The Russell Family Foundation

\$100,000 to \$499,999

Anonymous (4)
In Honor of Sarah-Maud
and Bob Silverstein
Robin A. Appleford
BAJ Capital, LLC
Jabe Blumenthal and Julie Edsforth
Forest Foundation
Michael and Lynn Garvey
Joan Gray and Harris Hoffman
Gray Family Fund of the Oregon
Community Foundation
Bruce and Carol Hosford
Gerry Johnson and Linda Larson
Juniper Foundation
Kongsgaard-Goldman Foundation
Bill Lewis
M.J. Murdock Charitable Trust
Craig McKibben and Sarah
Memer
Mithun
Pendleton and Elisabeth Carey
Miller Charitable Foundation
Floyd and Judy Rogers
Safeco Insurance Foundation
Sequoia Foundation
Ron and Eva-Maria Sher
David and Catherine Skinner
Doug and Maggie Walker
Weyerhaeuser Company
Foundation
Bruce Williams and Gro Buer

\$50,000 to \$99,999

Anonymous (3)
Home Depot Foundation
Brian and Traci Janssen Foundation
Peach Foundation
Frank Pritchard
Puget Sound Energy
Gregory Shaw
Steve and Liann Sundquist
TEW Foundation
Washington Women's Foundation

\$10,000 to \$49,999

Anonymous (4)
Adobe Systems, Inc.
Alaskan Copper & Brass
Company
S.D. Bechtel Foundation
Charles Bingham
Dick Birnbaum and Pamela
Okano
Cocker Fennessy Inc.
Davis Wright Tremaine LLP
Gene Duvernoy and
Carolyn Madsen
Enterprise Community Partners
Espresso Vivace Coffee Company

Expedia, Inc.
Mimi and William Gates
Greater Tacoma Community
Foundation
Green Diamond Resource
Company
Bert Gregory
Gull Industries, Inc.
HomeStreet Tree Challenge
Foundations
William and Elizabeth Hyde
Joshua Green Foundation
K&L Gates LLP
Klorfine Foundation
Lucky Seven Foundation
The Maria Norbury Trust
Master Builders Association of
King and Snohomish Counties
McDaniel Land Foundation
Merrill & Ring Forest Products LP
Mark and Christine Nagle
Norman Raab Foundation
Peter and Laura Orser
Pearl Jam
William Pope and Teresa Castner
Prairie Foundation
Norman Raab Foundation
Gail Ransom
RealNetworks Foundation
REI
Judy & Joe Sambataro,
Chairman of True Blue, Inc.
The Seattle Foundation
Silicon Valley Community
Foundation
Starbucks Coffee Company
Ruth and Bill True
Craig and Nicole Ueland
Wyco Fund

Up to \$9,999

Anonymous (15)
Eric Aagaard
AIA Seattle
Airport Auto Wrecking, Inc.
All Creatures
Anne & Mary Arts and
Environmental Education Fund
Jill Arango
Mike Arizona
Jim and Liahna Armstrong
Artcraft Printing Company Inc.
Arthur M. Blank Family
Foundation
David and Laurie Austin
Marybeth Austin
John Backus
Ernesta Ballard
Bare Root Plants
Emery and Lilly May Bayley
Reva and Sheldon Biback
Mary Bicknell
Peggy Bill and Stephen Sullivan
Carol and Carl Binder
Eleanor Boba and Alan Humphrey
Brian and Jessica Bodge
Boeing Company Matching Gifts
Boeing Employees Credit Union
Betty and Edgar Bottler
Bradley Hanson Photography
James and Sue Briggs
Geary and Mary Britton Simmons
Joan and John Broughton
Brown & Brown of Washington

Michael Calligaro
Patti and Richard Case
Cedar Grove Composting
Chateau Ste. Michelle
Gary Christophersen
City of Seattle Office of Arts
and Culture
Erica Cline
Coast Title & Escrow, Inc
Karen Colbert
Gayle Collins
JJ. and Jonine Collins
The Community Foundation of
South Puget Sound
Michelle Connor and
Mark Levensky
Jim Corson
Julie Coryell
The Jonathan C.S. Cox Family
Foundation
Fiona Cox
Ruth Daugherty and Bradley
Nelson
Craig Davison
Peter Dewey and Marian
Valentine
Derek and Holli Dexheimer
Barbara Downward
Kim Drury
Jeanne Dryfoos
Robert and Ingrid Eisenman
Emily Hall Tremaine Foundation
Joan Enticknap
Environ International Corporation
Deborah and Bill Essman
Charles Evans
Evo
Nicole Faghin and David Spence
Charles and Shirley Farnham
Stephen and Katherine Feldman
Alan Ferguson and Sue Summers
Finninsula Foundation
Sandra and Larry Fischer
Florence B. Kilworth Foundation
Daniel S. Friedman FAIA
Gallery Frames
Nona and Ulrich Ganz
Terry Gardiner
Laura and Grant Gardner
GGLO
Joseph B. Ginsburg
Girl Scout Troop #2318
Robert Girvin
Bryan Glynn
Greater Everett Community
Foundation
Jim Greenfield and Susan Barley
Torsten Griem and Michelle Oh
Leatrice D. Gutmann
William Haberkorn
Bill and Noel Hagens
Bob and Margaret Hager
Tom and Lynn Hamilton
Hancock Timber Resource Group
John and Joan Hartsfield
Frederick and Catherine Hayes
Margaret Heldring
Henry M. Jackson Foundation
Philip Herzog
Jerry Hillis and Diana Gale
George and Diana Holland
HomeStreet Bank
Loren Hostek
John Howell and Claire Powers

HSBC
Hugh & Jane Ferguson Foundation
Bert and Caroline Inglin
International Trademark
Association
David and Lucile James
Japan Ecosystem Conservation
Society
Sally and Warren Jewell
Jiji Foundation
Mark and Lynne Johnson
Larry and Deborah Johnson
Michael B. Keary
Thomas Kelly
Paul and Ludmila Kraabel
Ellen Kritzman
Arthur and Enid Kruckeberg
Kelly and Kent Larimer
Ann Lawrence
Peter Lindgren
Mark P. Lutz
Debra Madsen
Sandra Marsh
Julie and Todd Mass
Robin and Scott Mayberry
Deirdre and Jay McCrary
Mead Gilman & Associates
Debbie Meisinger
Microsoft Matching Gifts Program
Bonnie Miller
Louise and Stafford Miller
Bradley Millington
Alan Moritis
Mountaineers Foundation
Murray Pacific Management, Inc.
Terry and Gina Mutter
Ken Myer and Laurie Myer
National League of Cities
Sharon Nelson
Martha and Eugene Nester
New Belgium Brewing Company
Inc.
Merike and Douglas Nichols
Nitze-Stagen & Co, Inc.
Lois H. North
Casey O'Connor
Steve and Sally Ohlenkamp
Thomas C. O'Keefe and
Rie Yamazaki
Olympic Resource Management
Dan and Diane O'Neal
George Ostrow and
Meredith Binder
Ralph and Peggy Owen
Jim and Kathy Pankanin
Barbara Parke
Performance Radiator Pacific, LLC
Gwen and Phil Phibbs
Polygon Northwest
Port Blakely Companies Inc.
Port Blakely Tree Farms, LP
Portfolio Strategies, Inc.
Professional Convention
Management Association
Wayne and Kelley Quirk
John and Heidi Rabel
Douglass and Katherine Raff
Jeanne and Kevin Ralston
Rayonier Forest Resources
Wayne Rennick
Thomas and Teita Reveley
Sharon Rodman
Russell Matching Gifts Program
Nancy and Bruce Samuels
Satterberg Foundation
Donald Scott
Seattle Art Museum
Seattle Greendrinks
Seattle-Northwest Securities
Seaview Properties Northwest,
LLC
Gary Sexton
Shockey Planning Group, Inc.

Sidney Fund
Sierra Nevada Brewing Co.
Bob Sims
Social Venture Partners
SRG Partnership
Hal Stanley
Peter and Janet Stanley
James Sutherland
Alice and Phil Sweigert
Taylor Shellfish Farms
Sallie Teutsch
Matt Thomlinson and Dana Hurly
Margaret Thouless
Diana and Anthony Tognazzini
David and Chris Towne
Tulalip Tribes of Washington
John and Jill Turville
Robert Tyrrell
United Way of King County
Marie Vanschravendijk
Edward L. Vervoort
Janet Wall
Lisa Walrath
Jim and Christine Warjone
Washington Realtors@
Ed and Cynthia Weber
Robert and Kay Westinghouse
Chris Wilcox
Christopher and Sherry
Dee Wilson
Nancy Winder and J. Lawrence
Howard
Amy Worthington
Craig R. Wyss and Abigail Smith
Joella and William Yoder
Debbie C. Young and
Bruce Dunlop
Zimmer Gunsul Frasca
Architects LLP
Zipcar

Special thanks to the Washington
State Legislature and the
Governor's Office for their support
of Transfer of Development
Rights and to the Washington
State, federal and local governments
for their support of Green
City Partnerships.

The Cascade Land Conservancy is grateful for our individual, corporate and foundation contributors who support our efforts to conserve great landscapes and create great communities.

Contributions from January to December 2010

Conservation Circle Patrons (\$10,000 and above)

Anonymous (6)
 Alan Black Family Fund at The Seattle Foundation
 The Boeing Company
 The Burning Foundation
 Doug Walker Family Foundation
 Gene Duvernoy and Carolyn Madsen
 Earth Share of Washington
 Michael and Lynn Garvey
 Pete Higgins and Leslie Magid
 HSBC
 Gerry Johnson and Linda Larson
 K&L Gates LLC
 Klorfine Foundation

Kongsgaard-Goldman Foundation
 Microsoft Matching Gifts Program
 Nick and Leslie Hanauer Foundation
 Dan and Amy Nordstrom
 Port Blakely Companies Inc.
 Puget Sound Energy
 Quadrant Homes
 Rayonier
 Tricia Scanlon
 Schnitzer Steel Industries
 Ron and Eva-Maria Sher
 Tagney Jones Family Fund at The Seattle Foundation
 Taylor Shellfish Farms
 Craig and Nicole Ueland
 Joseph Vance and Sara Throckmorton
 Wells Fargo

Conservation Circle Guardians (\$5,000-\$9,999)

Anonymous (1)
 American Foundation
 Robin A. Appleford
 Barrett Family Foundation
 Jabe Blumenthal and Julie Edsforth
 Boeing Employees Credit Union
 CleanScapes
 Colliers International Seattle
 Davis Wright Tremaine LLP
 Hancock Timber Resource Group
 Microsoft Corporation
 Terry and Gina Mutter
 Casey O'Connor
 Beth and Wade Perrow
 Plum Creek Timber Company
 Prairie Foundation
 REI
 Rowley Properties, Inc.
 The Seattle Foundation
 Norman Tjaden
 David and Chris Towne
 Ruth and Bill True
 Vulcan Inc.

Conservation Circle Trustees (\$2,500-\$4,999)

Anonymous (2)
 James Apa
 BNSF Railway Company
 Betty and Edgar Bottler

Paul and Debbi Brainerd
 Jeff and Debbie Brennan
 Patrick and Karen Callahan
 Matthew Cohen and Kim Kemp
 Denny Miller Associates Inc.
 Molly and Talmage Edman
 Emily Hall Tremaine Foundation
 Bryan Glynn
 GordonDerr LLP
 Paul and Laura Gould
 Henry M. Jackson Foundation
 Hosford Family Foundation
 Carol and Keith James
 Mark and Lynne Johnsen
 Johnson Ohana Charitable Foundation
 Karr-Tuttle Campbell
 Conway Leovy and Carolyn Moloney Leovy
 Martin Flynn Public Affairs, Inc
 Master Builders Association of King and Snohomish Counties
 Bill McCullough
 Mithun
 Mark and Christine Nagle
 Pacific Portfolio Consulting, LLC
 Polygon Northwest
 Dixie Jo Porter and W. Thomas Porter
 Tom and Sally Reeve
 Salsar Family Foundation
 Judy & Joe Sambataro, Chairman of True Blue, Inc.
 Rob Short
 Stauffacher Communications
 Stoel Rives LLP
 Symetra Financial
 Tacoma Public Utilities
 Matt Thomlinson and Dana Hurlly
 Thompson Smith Consulting Group
 University of Washington College of Built Environments
 Washington Realtors@Weyerhaeuser Company
 Grant and Frances Woodfield

Conservation Circle Advocates (\$1,000-\$2,499)

Anonymous (7)
 Allen & Company, LLC
 Allen Brackett Shedd
 American Forest Land Company, LLC
 Sam Anderson
 Jerome Arbes and Anne Knight
 Mary Armstrong and John Lamb
 BAJ Capital, LLC
 Paul and Donna Balle
 Bancroft-Clair Foundation
 Bank of America Not For Profit & Private Education
 Ernest and Ellen Bay
 Bentall Kennedy
 Charles Bingham
 William and Mary Black
 Sarah Blocki
 Boeing Company Matching Gifts
 Toby Bright
 Lora L. Brown
 Cadman Inc.
 Cedar River Group
 Gary and Grace Christophersen
 City of Issaquah
 City of Seattle Combined Charities
 City of Seattle Office of Arts and Culture
 City of Seattle Parks and Recreation
 Diane Clark
 Cocker Fennessy Inc.
 Kelly Cole and Jon Tinter

JJ. and Jonine Collins
 The Commerce Bank of Washington
 The Communications Group
 Michelle Connor and Mark Levensky
 Darigold
 Elizabeth Davidow and Michael Ford
 Craig Davison
 Mary and Jim Dunnam
 Steve and Mary Elaine Dunphy
 Mark and DeLaine Emmert
 Joan Enticknap
 Jim and Gretchen Faulstich
 The Fearey Group
 Ellen Ferguson
 Foster Pepper PLLC
 Jerry and Phyllis Franklin
 Scott and Susan Freeman
 Daniel S. Friedman FAIA
 Dan Fulton
 Gallatin Public Affairs
 Kathryn Gardow and David Bradley
 Robert Girvin
 Gordon Thomas Honeywell LLP
 W.L. Gore & Associates, Inc
 Dan Grausz and Clare Meeker
 Joan Gray and Harris Hoffman
 Greater Kansas City Community Foundation
 Greenfield Advisors
 Bert Gregory
 Mike Griffith
 Virginia and George Gunby
 Barbara and Clayton Haberman
 Carl Haefling and Pam Johnson
 Tom and Mary Louise Hager
 Jerry and Linda Henry
 Hillis Clark Martin & Peterson P.S.
 Jerry Hillis and Diana Gale
 Hotel Murano
 International Forestry Consultants
 James M. Cox, Jr. Foundation
 Willy Jenkins
 Mike and Peggy Kanaga
 Dr. and Mrs. James L. Kelley
 Ted Koehn and Sloan Chong
 Laurelhurst Community Club
 Mark Leatham
 Konrad Liegel and Karen Atkins
 Lillian and Anthony Bay Family Charity
 Jacob Lucas
 Lucky Seven Foundation
 Joan McBride and Margaret Meister
 Nancy McCormick
 Meridian Environmental, Inc.
 Merrill & Ring Forest Products LP
 Miller Nash, LLP
 Samuel Miller and Anne Miller
 Allison Milliman
 Randa Minkarah
 Raymond Mosher
 Murray Pacific Management, Inc.
 Toby and Laurie Murray
 Nintendo of America Inc.
 Novastar Development Inc.
 Dan and Diane O'Neal
 Oregon Community Foundation
 Pacific Lutheran University
 Linda S. Park and Denis Janky
 Nancy and Don Pearson
 PenMet Parks
 Pierce County Surface Water Management
 Pope Resources
 Port of Tacoma
 Frank Pritchard
 John and Priscilla Privat
 R. D. Merrill Company



Bridging Communities in South Seattle

A profile of Andrea Ostrovsky and Mary DeJong, Forest Stewards at Cheasty Greenspace

With a "passion for the need for safe forested parks in our urban neighborhoods within which ALL could safely enjoy and

recreate" Andrea Ostrovsky and Mary DeJong set to work on reclaiming and restoring the Cheasty Greenspace. Before 2008, the park's trees were being smothered by English Ivy, its open spaces were being filled in by dumping, and its dark trails regularly hosted an assortment of illicit activities. Today, the park feels safer as sunlight streams through the trees (now ivy free) to welcome visitors who come to enjoy the Greenspace's natural beauty. This change is the result of the hard work of Cheasty's neighbors, including Andrea and Mary, the restoration efforts of devoted leaders and hundreds of volunteers from across the city.

Aside from the ongoing restoration happening at Cheasty, Mary and Andrea have a greater vision for their work. They see the Greenspace as a potential link between Beacon Hill's Lockmore neighborhood and Columbia City. "How amazing would it be to walk in the woods en route to the Columbia City Light Rail Station en route to work downtown?" asks Mary. The value of adding natural area to the morning commute is very clear. The two also see Cheasty as a venue for the diverse and traditionally underserved Rainier Valley community to get outside and enjoy experiences in an urban wilderness.

With assistance from the Green Seattle Partnership, Seattle Parks staff and two rounds of Department of Neighborhood grants and support, the group is ready to implement a new trail plan that will give neighbors safe access to and through the park.

DONORS

Runstad Center for Real Estate Studies
The Schuster Group, Inc.
Sellen Construction Company
Gregory Shaw
Short Cressman and Burgess PLLC
Sierra Nevada Brewing Co.
Paul Silver and Christina Marra
Langdon and Anne Simons
T. W. Stedman
Jeffrey Stern
Stewart Title Guaranty/National Title Services
The Student Conservation Association
Sullivan Conard Architects, PLLC
Steve and Liann Sundquist
SvR Design Co.
Jeffrey Tilden and Robin Silver
Touchstone Corporation
William Trinen
United Way of King County
University of Phoenix
Urban Renaissance Group, LLC
Vanguard Charitable Endowment Program
Steve Varga and Carmen Knoke
Catherine Walker
Washington Forest Law Center
Washington Forest Protection Association
Washington Women's Foundation
Manny and Sarah Weiser
Mike and Erin Welch
Michael Whalen
Chris Wilcox
Wildlife Forever Fund
Bruce Williams and Gro Buer
Phyllis Wise
Fran and Bunny Wood
Woodland Park Zoo
Martha Wyckoff and Jerry Tone
Sheila Wyckoff-Dickey and Charley Dickey
Debbie C. Young and Bruce Dunlop

Preservationist Members (\$500-\$999)

Anonymous (5)
Eric Aagaard
Loren Anderson
Richard Arcsott
AST Capital Trust Company of Delaware
Jim and Lesley Austin
Barghausen Engineers Inc.
Steve Bauer
Bruce Beckett
Bianchi Hatley, LLC
Dick Birnbaum and Pamela Okano
Fraser and Deirdre Black
Brian and Jessica Bodge
BOE architects, PLLC
Susan Brotman
Rodney Brown and Catherine Conolly
Karen Carlson and Michael Collins
Cascadia Building Company, LLC
Georgios Chrysanthakopoulos
City of Seattle
City of Tacoma
Shamra and Eric Clark
Martha Clatterbaugh and Michael Moody
Lynn Claudon and Charles Royer
Ruth M. Close
Andy Coe
Wally Costello
Ken and Rebecha Cusack

Maud and Marc Daudon
Ruth Daugherty and Bradley Nelson
James Defebaugh
Jay and Gaynelle Derr
Congressman Norm Dicks and Suzie Dicks
Rick and Polly Dodd
Theresa Dusek
Anne Fennessy and David Moseley
Chuck Findley
Charles Fleming
Thomas Galdabini
GeoEngineers
Adam Gerstenmier
Rick and Nancy Gervais
GLY Construction
Matt and Pia Graves
Greater Metro Parks Foundation
Greater Seattle Chamber of Commerce
Torsten Griem and Michelle Oh
Group Heritage
Thomas Haensly
Herrmann Scholbe, P.S., Inc.
Christopher Hoffman
William Horder
John Howell and Claire Powers
Robert and Vera Johnsen
Karen Johnston
JustGive
Brad Kahn
Kris and Sylvia Kauffman
Matt and Sara Kellogg
Wallace Kent Foundation
Ron Klein
Korsmo Construction
Sharon Lee
Mire Levy
Martha Lindberg
Tom and Juli Lindquist
James Margard
Julie Martin
Ryan Mello
Metro Parks Tacoma
Miles Sand and Gravel Company
Karen Myers
Natural Systems Design
Randy and Shellie Oakley
Pacific Lutheran University
Ben and Julie Packard
Jim and Kathy Pankanin
Pembroke Perlin Family
Don and Lisa Percival
Pilchuck Contractors
Billy Plauche
Point Defiance Zoological Society
Joanne Polayes Wien and Perry Wien
PRR, Inc.
Patrick Ragen
Ken Ratterree
Mike Riley and Vicki Fagerness
Floyd and Judy Rogers
Steven Rogers and Shelly Hall
George Rolfe
Brian Runberg
Stanley Savage
Patti Savoy
Michael and Wendy Schaefer
Eric and Deborah Shields
Simon Johnson, LLC
Simpson Investment Company
Scott and Holly Smolinsky
Margot Stiles and David Aries
Amanda Stock
Stoneway Concrete
Tacoma-Pierce County Health Department
Craig Tall
Bill Taylor

Joan and Mortimer Thomas
Cynthia A. Thompson
Steve Tidwell
John and Jane Titland
University of Puget Sound
Joel Van Etta
Tim Vinopal and Evelyn Vinopal
William Wagner
Susan Ward Potts
Nancy Lee Ward
Michael Whale
Lyn Wiltse
Gary and Lark Young
Nina Zingale

Steward Members (\$250-\$499)

Anonymous (12)
Nancy Ahern
Jack Anderson
Justin and Liza Anderson
Randy Apsel and Deborah Daoust
Jill Arango
Jim and Liahna Armstrong
Dee and Bill Armtz
Don and Sandi Bacic
Nicole Bahr
Lorrie and Eric Baldevia
Ted and Deborah Barkley
Ann Bassetti and Eugene Nutt
George and Sharon Bertsch
Brent Bishop
Mara and Brian Bohman
Donald Booth
Daniel and Nancy Bowen-Pope
Renagene and Robert Brady
Tom Bristow
Bonnie and Paul Bunning
Larry Burrows
Bob Carlile
Walt Carlson Memorial Fund
Cascade Designs
Candy Castellanos
Brenda Cooper
Lucy Copass
Alan Cornell
Dan Coyne
Bob Cranmer
Bruce Dammeier
Sophia Danenberg
Lisa and Michael Darling
John Davis
Jim and Karan Dawson
Suzan and Kurt DelBene
Bill Dewey
Ryan and Ann Dicks
Richard Du Bey
Reagan Dunn
Egan & Associates
William Eisenhart
Encompass Engineering and Surveying
Chris Endresen
Kristi England
Eddie and Ann Espinosa
Feathered Friends
Lloyd and Pat Fetterly
John Floberg
Kathryn Flores and Lynn Gordon
Kay Forsythe and Tuck Forsythe
Bryan Friend
Alden Garrett and Charlie Eriksen
Don Gartlan
Thelma and Charles Gilmur
Peter Goldmark and Wendy Goldmark
Jean-Pierre Green
Jim and Kathleen Greenleaf
Ann Gygi and Eric Jolley
GYL Construction
Tom and Lynn Hamilton

Jason and Joey Hamlin
Tom and Margot Hanson
Jeanette Henderson
Ed and Lisa Hewson
Carol and Peter Hickner
Tom and Arline Hinckley
Diane and Jim Huckabay
IMPWEAR
Sara Jones
Deborah Kappers
Keeney's Office Plus
Seamus Kelly
Giyen Kim
Frederick Klein
Bill Knutson
Rabbi Anson and Merrily McManus Laytner
Daniel Lee
Robert and Marti Liddell
Jenny and Steve Litzow
Scott Lockert
Christian Lucky
Ross and Lisa Macfarlane
Pat Malley
John Marchione
Troy Mathern
Brian McGinnis
Scott and Shelley McIntyre
Ross McIvor
Jeanette McKague
Eileen McLanahan
Kim E. McSheridan
Lewis and Julie Merges
Atsuo Miyake
Cole Monnahan
Gwendolyn and Patrick Moore
Mountain Madness
Jennifer Myhre
Kelli Jayn Nichols
Dave and Laura Nicol
Thomas O'Keefe and Rie Yamazaki
Peter and Laura Orser
Andrea and Aaron Ostrovsky
Steven Otto
David E. Overton
Paladin Data Systems Corp.
Parametrix
Mark Paris
Patagonia
Penelope and Gerald Peabody
Bill and Kathy Pettit
Eric Polzin
Dave and Li Porter
Irene Potter
Robert M. Price
Mike Pruett
Linda A. Proitt, The Cottage Company
PSG Washington, Inc.
Bob and Lisa Ratliffe
Regence Employee Giving Campaign
John and Sarah Rindlaub
Matthew Roberts and Wady Milner
Beth Rogers
Faith Roland/Roland Resources, Inc.
Russell Matching Gifts Program
Dave and Hazel Russell
Dick Ryon
Thomas and Susan Schmidt
David Schroedel
David Seago
Seattle Bank
David and Catherine Skinner
Mike Smallmon and Sandy Smallmon
Dale and Susan Smith
Jared Smith and Karen Daubert
Lauren D. Snider
Dale and Carol Sperling

Julie Stein
Will Stelle
Sternoff LP
Andrew Stout
Herbert and Gwen Stumpf
Bonnie and John Tabb
Gael and Bob Tarleton
Ellen Taussig
Joannie Taylor and Kenneth Matney
Sri and David Thornton
Anna Thurston
Steven and Nancy Tochko
Martha Tucker
United Way of Snohomish County
Stephanie Van Dyke
Michele Vivona
Colin Wagoner
Elizabeth J. Warman
Raleigh Watts
Waypoint Outdoors
Dale Weise
Marianne and Matthew Wells
Sharlene and Herb Welsh
Steve Whitney
Daniel Williams
Margaret Wolf
Charles R. Wolfe, Attorney at Law
Wanda Wong
Cheryl Woodruff
Paul Wright
Yarrow Bay Holdings
Melissa Yeager and Cory Van Arsdale
Alan and Toni Young
Margo Young
Erin Younger and Edward Liebow

Protector Members (\$100-\$249)

Anonymous (47)
Knut Aagaard
John L. Adams
Adobe Systems Inc. Matching Gift Program
Steve and Alice Aeschbacher
Rick Agnew
Gordon and Marilee Ahalt
Jeff Aken and Summer Hayes
Patricia Akiyama and David Larsen
Sean Alberts
Brooke Alford and Bill Wollaston
Ryan Alger
Sally Alger
Tony Allison
Allen Brackett Shedd
The Alta Group, Inc.
Rose Amick
Stephen Amorosi and Gayle French Amorosi
Bruce and Joann Amundson
The Ancinas Family
James Andersen
Blair Anderson
Don Anderson
Douglas Anderson and Anne Noonan
Jason Anderson
Karl and Christine Anderson
Kathleen and David Anderson
Rick and Melissa Anderson
Suzanne and Marvin Anderson
Virginia Anderson
Sid Andrews
Lyle Appleford
Carol Arnold
Jay Arnold and Mary Beth Binns
Bill and Debora Arthur
Vasili and Abigail Arvanitidis
Aspect Consulting

Lucia Athens
 Bill and Carol Baarsma
 Bruce and Diane Bachen
 Thomas Eli Backer and
 Jane Leslie Newberry
 Lee Badovinus
 Ruth Baetz
 Sally and Brad Bagshaw
 Ann Bailey
 Larry Bailey
 Eric Baker
 Sharon Baker
 Ben Bekkenta and Eric Snow
 Jim Baldes
 Josh Baldi
 Heather Ballash and
 Marcus Roening
 Cal and Joanne Bamford
 Paul Bannick
 Chuck Barber
 Steve Barger
 John and Sally Barline
 Elliott Barnett
 Miriam Barnett
 Amanda J. Barney
 Dan Barrett
 Tom Bartholomew and
 Sarah Mack
 Barry Bartlett
 Kevin and Dawn Bates
 Ken and Nell Batker
 BCRA, Inc.
 Philip Beach
 Hal Beals
 Mark Beardslee
 Mark and Christina Beatty

Kurt Beckett
 Greg Bedinger and Jan Mulder
 Lisa Bellefond
 George Bennett
 Julia Bent
 Paul Bergman
 Rob Bernard
 Betz Bernhard
 Linda Berry-Maraist
 Scott Bevan
 Stacey Bevan
 Paul Bialek
 Benjii Bittle
 Adam and Erin Black
 Merrill Black
 Dale Blahna
 Joseph Blessing
 John and Maria Bliss
 Philip and Laura Bloch
 Mary Lou and Peter Block
 Joseph Bogaard
 Steve Bolliger
 Jen and Aaron Bosworth
 Kenneth Bounds and
 Linda Gorton
 David and Lisa Bowen
 Linda M. Bowers
 Dave and Carlotta Boyd
 Doug and Nancy Boyden
 Steve Boyer
 Elizabeth Boyle
 Matthew Boyle
 James Bradley
 Cynthia Bradshaw
 Brynn Brady
 Joe Brady

Nick Bratton
 Rick Brehm
 David Brewster
 Paul and Laurie Bride
 Weston Brinkley
 Eric Brock
 Matt Bromen
 Joshua Brower
 Bill R. Brown
 David Brown
 Larry Brown
 Lindy and Jay Bruce
 Wray and Dorothy Buck
 Vicki Bunker
 Joe Burcar
 Bruce Burdick and Layne Hersh
 Jim Burgess
 Charlie Burke
 Joan Burlingame
 Bob Burns
 Michael G. Burns
 Robert and Elizabeth Burns
 Ted Burris
 Ranan Burstein and
 Michelle Frame
 Sue Butkus
 Bill Butler
 Tom Byers and Carol Lewis
 Dan V. Byrne
 Cairncross & Hempelmann
 Steve Calhoon
 Robert and Sharon Camner
 Elizabeth Campbell
 Mick and Lavonne
 Stewart-Campbell
 Bob Cannon

Dick Carkner
 Donald Carlson
 LuAnn Carlson
 Bret and Cynthia Carlstad
 Maggie Carr
 Linda Cariveau
 Taylor Carroll
 Catherine Carter
 Charlie and Amy Carter
 Derrick and Lauren Cartwright
 Suzanne Cartwright
 Patti and Richard Case
 Libby and James Catalinich
 Sandy Cavanaugh
 Cheryl Cebula
 Kristi Ceder
 Timothy Ceis and Karen Reed
 Lee Cerveny
 Leda Chahim
 Bill Chapman
 Jim Chapman
 Rabby and Althea Chapman
 Brianna Charbonnel
 Natalie Cheel and Corey Brennan
 Anthony Chen
 Jamie Cheney and John G. Lever
 Vinaya Chepuri
 Martha Choe
 Keith Christian
 Glen Christofferson
 Jim Cieccko
 Ione and John Claggett
 Rosemarie Clark
 Jon Clarke
 Judy and Bruce Clibborn
 Robert Cline
 Richard and Rita Cloney
 Ainsley Close
 Joe Coakley
 David Coburn
 John Cochran
 Ric Cochrane
 Candace Coe
 Richard G. Cole
 Shawn Cole
 Natalie Coleman
 Darryl Colkopa
 Katie Collier
 Alexander and Heather Collins
 Arlan Collins
 Theodore Collins and
 Patricia Collins
 Councilmember Richard Conlin
 Dianne Conway
 Dave Cook
 Sharon Cooper
 Shaun Corry
 John Corso
 Larry Costich
 Fiona Cox
 CPA Consulting
 CPH Consultants
 Alan Crankovich
 Mark Crawford
 Stacey Crawshaw-Lewis
 Edward Crell and Dawna Leong
 Crystal Creson-Carter and
 John Carter
 Debra Crespian and Lois Harris
 Charlie Crissman
 Bruce Cross
 Paul and Jane Crowder
 Sara Crumb
 Layne Cubell
 Rich Cuff
 Crissa Cugini
 Bob Cundall
 Mary Cunningham
 John Curtis
 Donald Dahlgren
 Scott Dahlquist
 Rose Marie and David Dale

Mark D'Amato
 Randy Daniels
 Lori Danielson
 Dennis and Stephanie Dart
 Rosemary Daszkiewicz and
 Guy Thomas
 Bob and Molly Davidson
 Bur Davis
 Chris Davis
 Patricia Davis
 Mark Davison and
 Kathleen Galloway
 Dana Davoli
 Marco and Ryangia de Sae Silva
 Tom Dean and Shelley Means
 Mike Dederer
 Becca Deehr
 Paul and Heather DeFaccio
 Shanon Dell
 Paul Desilet
 Paul Detmer and Kathleen Roach
 Daryl and Janelle Deutsch
 Julian and Alice Dewell
 Peter Dewey and Marian
 Valentine
 Emily Dexter
 David Dicks and Antonia Jindrich
 Rhona Diehl
 Martha Dinwiddie
 Dan Dixon and Sherry Williams
 Roscius N. Doan and
 Virginia M. Warfield
 Irene Dorang
 David and Wendy Dorothy
 Mark Doumit
 Susan Dowie
 Daniel Drais
 Patrick Drum
 Darby and Stephen Ducomb
 Doug Dunham
 David Dunneback
 Patricia Duquet
 Rita and Harlan Durand
 Martin J. Durkan
 Earth Corps
 Deb Eddy
 George Edman
 Shirley Edwards
 Will Einstein
 Mickey Eisenberg
 Gerald Eller
 Richard and Diane Elliott
 H. Stuart and Irene Elway
 Stan Emert
 John Engber and Bergitta Trelstad
 Gretchen Engle and
 Scott Winslow
 Helen and Stan Engle
 Environmental Coalition of
 South Seattle
 Jim and Lynn Erckmann
 Ara Erickson and Eric Higbee
 ERM
 Eldon and Carol Estep
 Everett Mountain Rescue
 Jonathan Eytinge
 Joe Fain
 Giselle Falkenberg
 Gary Fallon and Leona De Rocco
 Mike Fancher
 Kevin Farrell, Dept. of Ecology
 Andrea Faste
 Rollin Fatland & Associates
 Dan Fear
 Jeremy Febus
 Jim Feldmann
 Rose Feliciano
 Mary Ferguson and
 Raymond Ferguson
 Kathy Fewins
 Jake Fey
 Mary Fiala



Youth Take the Lead

Volunteer Spotlight on Alvin Loong and
 Laura Svancarek

Act locally. That catchphrase is manifested completely in the volunteer work that Alvin Loong and Laura Svancarek do on behalf of their local urban green space, Hartman Park, in Redmond. These two high-schoolers volunteer with the Green Redmond Partnership as Forest Stewards for Hartman Park, and are responsible for coordinating and leading work parties there to get other volunteers involved. They also work with CLC and Redmond City staff to help come

up with work plans for restoration in the forested greenbelt in the park. The youngest Forest Stewards in the program, yet highly involved, Alvin and Laura got their start in conservation work with their school's Environmental Club where they, along with other club members, are the sole labor force for their school's recycling program. This dedication to caring for their natural world is translated in their volunteer work with CLC. "Volunteering has definitely made a change on my outlook of life- I don't do it for any credit or out of boredom whatsoever. I do it only because as one person, I really can make a difference," says Alvin. Their enthusiasm is hard to resist, and comes across easily to other volunteers they work with. "It's a great feeling to see what a huge difference an event can make on an area," added Laura. CLC is thankful for the exuberance that Alvin and Laura display and the great work they've done to keep Redmond's urban forest healthy. Their passion for taking care of their local park makes it easy to think regionally about conservation.

DONORS

Terry Finn
Steve Finney
Chris Fiori
David Fischer
Tom Fitzsimmons
Suzy Flager
Kathy Fletcher
Flora and Henri, Inc.
Gerard Flower
Barbara Floyd
Emma Ford
Richard Ford
Sarah Foster
Nancy Fox and Nicholas Allison
Jules Frazier Photography
Kirsten Frandsen
The Frause Group
Kristie and Scott Frericks
Jennifer Frey
Maureen Frisch
Ava Frisinger
Kurt Fritts
Susan and Albert Fuchs
Miki Fujikawa
Sean and Michele Gaffney
Derrek Gafford
Clare Gallagher
Tim Gallagher
Nona and Ulrich Ganz
Laura and Grant Gardner
Michael Garner
Deborah Gayle
Bill and Lindy Gaylord
Gary and Debbie Geddes
Bonnie Geers
Barbara Geiger
Vanessa Gemmill
Don and Susan Gerend
Anthony Gibbons (RE-SOLVE)
Mark Gibson and Helen Tsao
Bill and Roxy Giddings
Allan and Carol Giffen
Steven Gilbert
Kent Gilges
Eddie Gilliss
Lili Gish
Kevin Godbout
Jean Godden
Margery Godfrey
Robert Goforth and Randy White
David Lisa Goldberg
Jennie Goldberg and Peter Stekel
Thomas Goldstein
Greg Gooch
Roger Goodman
Robert Gordon
Pat and Dennis Gossler
Harvey Grad
Grantmaker Consultants Inc.
Amanda Gray
Mark Gray
Rhonda Green
Greene Wealth Management
Duncan Greene
Greener Living Solutions -
Bert Bradley & Joanna D'Asaro
Benjamin Gruel
Martinique Grigg
Jerome and Carol Gronfein
Kevin and Dawn Grossman
Gregory Guedel
Deb Guenther
Christian and Julie Gunter
Kamuron Guro
Paul Gustie
Karen Guzak
Randolph B. Haagens
Habitat Bank, LLC
Jeannie and Steven Hale
Nathan Hambley
Russ Hanbey and
Jeanne Anderson
Dave Hancock and Bo Ryan

Robin Hansen
Katlin Hanson
Lloyd Hara
Donald and Gayle Harris
George Harris
Shonnie and Randy Harrison
Duane Hartman
Suzanne Hartman
Jeffrey and Carey Hashimoto
Chris Hatscher
Robert Hauge
Leah Hausman
Barbara Hawkins
Brian Hawkins
Frederick and Catherine Hayes
Ray Heacox
Ada Healey
Ken Hearing
Heartland
Steve Hecker
Marni Heffron
Gwendolyn and W. C. Ted Heib
Susan Heikkala
David and Constance Hellyer
Sara Hemphill
David Hendry
Ron and Mulan Hendry
Lisa Henke
Timothy and Catherine Hennings
Dale Henningsgaard
Carol Henry
Greg Hepp
Lori Herman
Russ Hermes
Joaquin Herranz
Teri Herrera
Philip Herzog
Patricia Hickey O'Brien and
Edward O'Brien
Genie Higgins
Richard Hill
Merrill and Bertil Hille
Catherine Hillenbrand
Bruce Hilyer
Melissa Hines
Mark Hinshaw
Kenneth Hite
Doug Hockersmith
Kim Hoff
Harry S. Hoffman
Lisa Hoffman
Brianna Holan
Cynthia Holdren
Peter & Ann Holmes
Stephen Holt
William Holt
Eric Holtz and Jean Guth
Carolyn Hope
Shane Hope
David Horrihan
Hos Bros. Construction, Inc.
Jeff Hou
John and Janice Houck
Mark Houtchens
Cynthia and John Howe
John Hoyt and Lisa Fitzhugh
Shaun Hubbard and Harold
Kawaguchi
Heidi Hughes
David Hull
Robert Hull
Sally Hulsman
Ann Hungar
Julie and Gordon Hungar
Rick Hunter
Rep. Ross Hunter
Laura Huntington
Mark and Mollie Huppert
Christopher Hurst
Chris Husband
Thomas and Janice Huseby
Matt Huston and Sherry Smith
Jim Hutchinson

Charles Hyde
Sarah Hyman
Michael Hytopoulos
Maro Imrizian
Joe Intile, Nats Nursery
Jonathan and Rosemarie Ives
James and Susan Jacobson
Joy Jacobson
Greg Jacoby
Mark Jacox
Jayray Ads & PR, Inc.
Robin Jenkins
Deborah Jensen and
Steven Malloch
Sue and Jim Jensen
JNJ Imports, LLC
Eric Johnson
Greg Johnson
Michelle Johnson
Nancy Johnson
Todd and Marian Johnson
Brewster Johnston and
Kris Romstad
Kate Joncas and David Traylor
Craig Jones
David Jones and Anemiek Jones
Frankye Jones and Brock Robison
Susan Jones
Lorna Jordan
Maryann Jordan
Edward Josberger and
Berit Kvaernes
Mike Jostrom
Dysa Kafoury
Patricia Kahn
Robert Kaplan and Margaret Levi
Arthur Kaufman
Michael Keary
Tim A. Keck and Abigail L. Gross
Larry Keil and Kay Peters
Herman Kelber
Kathleen Kelley
Thomas Kelly
Keith Kemp
Heber Kennedy
Mariah Kennedy
Frank Kenny
Julie Keough
Marie Kermie
Georgia Kerr
David Ketter and Mary Jo Ketter
Tom Kilbane
Michael Killoren
John Kilpatrick
Sandy Kilroy
David Kimmett
Scott Kindred
Gregory Kipp and Christine Farris
Kirk Kirkland
Kittitas Audubon Society
Pesha Klein
Robert and Dale Klein
Kevin Klinemeier
Brian and Ginger Knox
Deborah Knutson
Jim Kodjabian and Maria Denny
Curtis Koger
Richard L. Koon
Warren Koons
Eric Koomann
Cary Kopczynski
Paul and Ludmila Kraabel
Donald Kraft
Jim and Brenda Kramer
Kathy Kravit-Smith
George and Sue Kresovich
Brian Kristjansson
Ellen Kritzman
Ken Krivanec
Yvonne Kuperberg
Bradley and Ronda
Lagerberg Miller
Bruce and Brigid Laing

Katherine Laird
Lake Union Partners
Patrick Lamb
Karen Landen and Dean Stahl
Laurie Landeros-Hoggard
Julie and Kent Langabeer
Bill and Molly LaPatra
Terry Larson
Tory Laughlin Taylor
Mark Lawler
Patricia Leach and
Stephen Roberts
Robert Leach and
Dr. Catherine Otto
Kory Leadon, Brighton Jones
John and Ethel Leary
Stephen C. and Paulette Lemon
Michael Leningtav
Marc Lentini
Al Levine
Chelsea Levy
Roberta Lewandowski
Frances and John Gregg Lewis
Tad Lewis
Sarah Lewontin
Kate J. Lichtenstein
Shawn Lilley
Alexandria Lim
Louise Lindgren and
David Cameron
Ed Lindner
Hal and Gloria Lindstrom
Suzanne Linenberger
Sharon and William Linton
Paula and Matt Little
Sally Lively
Kate and Noel Lloyd
Nancy Locke
George Lockeman
Marty Loesch
John Lombard and Jenny Haykin
David Lonergan
Craig Lorch
Chad and Wendy Lorentz
Michael Lorenz
Mary Virginia Love
Keith Loveless
Tom and Megan Luce
Chauncey and Elizabeth Lufkin
Annalee Luhman
Sheila Lukehart and James
Tom Kilbane
Doug Luna
Dan and Catherine Lungren
Mark Lutz
Paul Lymberis
Pete and Olga Lymberis
Patricia Lynch and Frances Ford
William and Patricia Lynn
Teresa Macaluso
Kelly Jo and
Christopher MacArthur
Colin Macdonald
Douglas MacDonald
David and Sara MacDuff
Joan Machlis
Sally Mackey
Alan Macpherson
Elizabeth MacWhinney
Bart Madison
Mary Mahaffy
Monty Mahan
Peter Maier and Elizabeth Tennant
James Malone
Lindsay Malone
Kelly Mann and John Kenley
Michael Mann
Jean Manwaring
Andy Marcelynas
Doreen Marchione
Steve Marek
Hank Margeson
Market Insights Inc.

Stephen Markowitz
Elliot Marks
Andrew Maron
Bill Marre
Chris Martin
Nannette Martin
Ikuno Masterson and Paul Clymer
Milenko Matanovic
Matt Matayoshi
Amy and Grant Matsuno
Tara Mattina
Mark Mauren
Dennis and Gwenn Maxwell
Marcie and Steven Maxwell
Robin and Scott Mayberry
Amy McBride
Marie McCaffrey
Darren M. McCallon
David McCallum
Pat McCarthy
Doug, Kristi and Jacob McClelland
Mike McCormick
John and Jeannie McCoy
Tyler McCoy
Deirdre and Jay McCrary
Linda McCrea
Jane and Rich McCurdy
Charles McDonald
James A. McDonald
Dave McEntee
Chris McGarvey
Helen and Michael McGovern
Peter and Barbara McGrath
Mary McKelvey
Gates McKibbin
Frank McKulka
Sue McLain and Steve Persing
Dan McReynolds
Neil and Nancy McReynolds
Colleen McShane
Mr. Barry Meade
Ken Meidell
Bob Meier
Mike Melancon and
Glenn Johnson
Edward Melillo
Bruce and V. Gladys Mello
Ann Melone and Boyd Pickrell
Joe Mentor
George and Suzanne Merriam
Sharon Metcalf
Kit Metlen
Joan Meyer
Robyn Meyer
Josh and Katie Miller
Louise Miller
Raymond E. Miller and Linda
Dunn
Michael Mirra
Cindy Mitchell
Mike Moody
Bliss Moore
Sara and Jeffrey Moorehead
Jeane Morel
Harry Morgan
Jason Morgan
Leslie Morison and Todd Stine
Alan Moritis
Joan Moritz
Mike Mosman
Dearborn & Moss
The Mountaineers
Gary Mozel
Jeanne Muir
Gail Muller
Greg Mummy
Ian Munce
Bill and Mary Ann Mundy
Joseph F. Murray
Kirk and Jenny Myers
Teresa and Dale Myers
Bob Myrick
Mary Myslewicz

Ralph Naess
 Kenichi Nakano
 John Narver
 Bowman Neely
 Joanna Nelson
 Sharon L. Nelson
 Sharon and John Nelson
 Wayne Nelson
 Craig Nevil
 Chip Nevins and Amy Snover
 Tracy Newman
 Uyen Nguyen
 Doru Nica
 Jim and Lynda Nicholson
 Greg Nickels
 Dennis Nicks
 Adam Nishimura
 Niva Philanthropy Fund
 Courtney Noble and
 Thomas Bates
 Jeff Nomi
 Lois North
 Warren Northrop
 NuBe Green LLC
 Steve Numata
 Brenda and Art Nunes
 Dave Nunes
 Roger Nyhus
 Mike and Julie O'Brien
 Reba Olsen
 Olympic Nursery - Woodinville
 Olympic Resource Management
 David O'Neal and Barbara
 O'Neal
 Denny and Holly Onslow
 Terry O'Reilly
 Orion Real Estate Advisors LLC
 Leif Ormseth
 Maddie Orser
 Tina Orwall
 Osprey Packs, Inc.
 Jon Owen
 Ralph and Peggy Owen
 Terry Oxley
 Margaret Padelford
 Gregory and Cathryn Palmer
 Marshall T. Palmer
 Theresa Pan Hosley and
 Larry Hosley
 Dave Panco
 Dawn Pannell and Ron Pannell
 Mark Parker
 Matt Parker
 Don Parks
 John Parrot
 Craig Partridge
 Carol and Evans Paschal
 Jon and Jacquie Pavey
 Tia Paycheff
 Beth Pearson and David Zane
 Eriann Pearson
 Jamie Pedersen
 Neal and Patricia Pedersen
 Virginia Pedreira
 Dwight Pelz
 John Perlic
 Michael Perrow
 J. Henry Peters
 Barbara and Louis Peterson
 Claire Petrich
 Billy Pettit
 Kevin Phelps
 Jocelyn Phillips and
 Warren Bakken
 Larry Phillips
 Simon Philp
 Tom Pierson
 Pine Lake Garden Club
 Pinnacle Sales NW, Inc
 Plum Creek Timber Co.
 Joseph Polito
 Port of Edmonds
 Jennifer Porter

David Powell and Sevil Toksu
 Carol Lee Power
 Jessica Powers
 James and Peggy Price
 Peggy Price
 Stan Price
 Max Prinsen and
 Erin Wojewodzki-Prinsen
 Jeanette Privat
 Bill Ptacek
 Purdy Associates, Inc.
 Joe Quaintance
 Eileen V. Quigley
 Lisa Quinn
 Brooks Ragen
 Patrick A. Ragen
 Isabel Ragland
 Charles Raines and
 Cindy Seramur
 David Ramsey
 Debra Ramsey
 Larry Ransom
 Ethan Raup
 Spencer Reeder
 Steve Reents
 Mark Reis
 Lisa Rennie
 William and Lois Rex
 Jennifer Reyes
 Liz and Don Reynolds
 Derrick Rhayn
 Lisa Richmond
 Steve Richmond
 TC Richmond and
 Keith Richmond
 Sharon Kay Ricketts
 Andrea Riddick
 David Rietmann
 Paula Riggert
 Andrea Riniker
 Sol Riou
 Dan Ritzman
 Alicia Robbins
 Darwin Roberts and
 Michelle Jensen
 Mary Helen Roberts
 Paul and Marianne Roberts
 Shannyn Roberts
 Randon Robinson
 Steve Rolfe and Laureen Light
 Harry Romberg
 Tom Rook
 Steve Roos
 Gretchen Roosevelt and
 Tom Bates
 Jon Rose
 Michael Rosenfeld
 Roslyn Sunday Market
 Brian and Kim Ross
 Zoe Rothchild
 Nancy Rottle and Paul J. Olson
 Steve Rovig
 Rowley Properties, Inc.
 Bob Royer
 Catherine Rudolph
 Steve Ruff
 Stan Rumbaugh and Sarah
 Human
 Joann Smith
 Debra and Tom Rutherford
 Clare Ryan
 Joe Ryan
 Fred Sadaghiani
 Rebecca Sadinsky
 Safeco Insurance Employee
 Giving Programs
 Isabel Safora
 Jodie Salz
 Susan Sanchez
 Carol Sanders and John Loux
 Ann and Wayne Sandstrom
 Mark and Leela Sanelli
 Bill Sanford

PJ. Santos
 Jay A. Satz
 Jessica Sawin
 Gerrit Saylor and Kimberly Keagle
 Norm Schaafl
 Sheryl Schmeling
 Pat Schneider
 Lynn Schrader
 Scott Schreffler
 William Schwartz
 Joseph Scorcio
 Brian Douglas Scott
 Doug and Kelly Scott
 Tiffany Scott
 Dave and Vergia Seabrook
 Seattle Garden Club
 Seattle Parks Foundation
 Seattle Shellfish
 John and Dorothy Selby
 Amanda Senft
 Jennifer Severin
 Bill Severson and Meredith Lehr
 Steve T. Seward
 Darrin Shedd
 Steve Sheehy
 Amanda Shellenberger
 Qing Shen
 Mark Sherard
 Vince Sheridan
 David Sherman
 Shawna Sherman
 George F. Sherwin
 Darlene Shevham and
 Douglas Metz
 Haeryung Shin
 Shockey Brent, Inc.
 DeLee Shoemaker
 Jan and Jack Showalter
 Mark Sidran and Anais Winant
 Zach Silk
 Terri Silver and Rick Huey
 James Simmonds
 Matthew Simo
 Bob Sims
 Leigh Sims
 Robert Sindelar
 Lynn Siniscalchi and Susan Waller
 Barbara Skinner
 Lloyd Skinner
 Ryan Slemmons
 Barbara Smith and Mark Oberle
 Bill Smith
 Blake Smith
 Jason Smith and
 Teresa Torrance-Smith
 Laura and James Smith
 Marc Smith
 Matt Smith and Lynn Cohee
 Monty Smith
 James and Karen Solimano
 Richard and Cynthia Sonstelie
 Dale Sowell
 Sarah Spaeth
 Derek Speck
 Betty Spieth
 Larry Springer
 David St. John and Megan Smith
 Bill Stafford
 Julie Stangell and George Bennett
 Court Stanley
 Philip and Janet Stanley
 Lois Stark
 Anthony Starkovich
 Renee Staton and Brian Heaney
 Bill and Jennifer Stauffacher
 Stephanie A. Stebich
 Kevin Steffa
 Jamie Stephens
 Lauren Stephens
 Rob Stephenson and
 Jennifer Stephenson
 Ed and Kathy Sterner
 Michael Stevens

Nancy Stevens
 Matt Stevenson
 Barbara and Thomas Stever
 Candy Stewart
 Lisa Stewart
 John and Sherry Stilin
 Steve Stinson & Lou Jean Clark
 Bettina Stix
 Stoel Rives
 Jessica Stokesberry
 Scott Stolnack
 Peter Stoltz
 Keith Stone and Crystal Stone
 Kristin Storm
 Stacia Stratton
 Melissa Strauch
 Elizabeth Street
 James Street
 Peter Streit
 Dan Stroh and Lucie Huang
 Linda Strout
 Pat Sullivan
 Nicholas Sumpster
 Diane Supler
 Kathy Sutalo
 SVR Design Company
 Scott and Lynn Swanson
 Andy and Veralea Swayne
 Skip Swenson
 BrynDel Swift
 Hayes Swinney
 Walter S. Tabler
 Rick and Kathryn Tackett
 Dave Tarshes and
 Deborah Kerdeman
 Kate Tate
 Suzanne Teachey
 Tom Teigen
 Jay Tejera
 Jeff Tepper
 Terra Valuations, LLC
 Janine Terrano
 Katy Terry
 Rahul Thombre
 Critter Thompson
 Jean Thompson
 Rex Thompson
 Sara Thompson
 David Thorud and Ann Goos
 Danielle Tiedt
 Bill Tirrill
 Fred and Dorothy Tobiason
 Matt and Rhonda Topham
 Myrna Torrie
 Aaron and Meghan Toso
 Steve Toth
 TPU
 John Traeger
 Blake Trask
 Arun and Ellen Trikha
 Heather Trim
 Frances Troje
 Karen True
 The Trust For Public Land
 Tom Tuchmann
 Chuck Turley
 James Tuttle and Ruth Ann Mikels
 Tim Tynan
 Pat Vache
 Frank Van Dusen
 Marsha and Jerry Vandenberg
 Edward Vervoort
 Sasha Visconty
 Penny and Morris Wade
 John and Marka Waechter
 Reed and Christina Waite
 Brady Walkinshaw
 Janet Wall
 Kevin Wallace
 Robert and Joan Wallace
 Sandra Wallace
 Mike Waller and Kate Grieshaber
 Lisa Walrath

Tom Walsh
 Julia Walton
 Andy Wappler
 Robert Warfield
 Mark J. Warner
 Rosemary Warren, DDS
 Todd Wathey
 Craig Watson
 Denis Watts
 Jeff Watts
 Craig and Eva Weaver
 Ellen Webb
 Rob Webb
 Kathie and Randy Weibel
 Paige Weinheimer
 Joe Weinstein
 Stephanie Weir
 Thomas and Kristina Weir
 Steve Weise
 Mary D. Welborn and
 John R. O'Brien
 Bryan and Katie Welsh
 Ann Welz
 West Coast Land
 Development Inc
 J. Michael West
 Elliott Westerman
 Myron and Joella Weybright
 Jason Whalen
 Gilda Wheeler and Ben Wheeler
 Mark Wheeler
 Jane White Vulliet
 Philip White
 Kent Whitehead
 Thomas Whittemore
 Diane Wiatr
 Robert and Sara Wicklein
 Scott Wigren
 The Wilderness Society
 Chuck Wilke
 Michael Wilkins and
 Suzanne Olson
 Charles Wilkinson and Melanie Ito
 Claire Wilkinson
 Doug and Shirley Wilkinson
 Jason Wilkinson
 Shawn Williams
 Stuart Williams
 Tim Williams
 Frances Williamson
 Christopher and Sherryl
 Dee Wilson
 DJ Wilson
 Jack Wilson
 Richard and Catherine Wilson
 Michael and Victoria Winnick
 Linda Wold
 Frederick Wolf
 Fritz Wollett
 Judith Woods
 Chad Wright
 Corey Wright
 David Wu
 Ted Yackulic
 Mary Yelanjian
 Mary Yoder-Williams
 Tay Yoshitani
 Doug Yost
 Lenny Young
 Jeanne Yu
 Rich Yukubousky
 Mona Yurk
 Sue Yuzer
 Laura and Philip Zalesky
 Allen and Ellen Zulauf

DONORS

Tributes

In Honor of Robin Appleford's birthday
 In Memory of John Arum
 In Honor of Joan Ayers
 In Memory of Gwynne Baker's Mom
 In Honor of Martha Beard
 In Honor of Jolene Beitz
 In Memory of Boomer
 In Honor of Kit Brandt
 In Honor of Pamela Butler
 In Memory of my late husband Robert W. Clark
 In Honor of Mason Clark
 In Honor of Gigi Coe and Mike Garland
 In Honor of Mark Levensky and Michelle Connor
 In Honor of Isaiah Crawford
 In Memory of Gene Dalaba
 In Memory of David R. Dellplain
 In Honor of Patrick Drum
 In Honor of Steve Dunphy
 In Honor of Gene Duvernoy
 In Honor of Elizabeth and James
 In Honor of Filson
 In Memory of Marilyn Fite
 In Memory of Doug Fleming
 In Honor of Charles Fredrickson
 In Honor of Steven Friedman
 In Memory of Rachel Geer
 In Memory of Matthew Girvin
 In Memory of Mike Grant
 In Memory of Ken Hartz and Kathy Bergum
 In Memory of Anne Hempstead Herrmann
 In Honor of Albert Herrera
 In Memory of Doris Huff
 In Memory of Bill Kirk, Billville
 In Memory of Ian Kraabel
 In Memory of Merrily Laytner
 In Honor of Carl Leopold
 In Honor of Ryan and Kelly MacDicken
 In Honor of Diana MacDonald, Cowlitz PUD
 In Honor of Machinists Union
 In Honor of our clients this year
 In Honor of Max, Toby, Raizel
 In Memory of Robert McKenzie
 In Honor of Michael Medved
 In Honor of Ryan Mello
 In Memory of Winona Miller
 In Honor of Amanda Minix
 In Memory of Mose
 In Memory of John North
 In Memory of my parents and grandparents
 In Honor of Jeff Pavey and family
 In Honor of Niles Rosevear Paxton
 In Memory of Lois Pearson
 In Memory of Lucille Phaneuf
 In Memory of Frances Pilaro Wolsteholme
 In Honor of Frank Pritchard
 In Memory of Priscilla Pryor
 In Honor of Kelley and Wayne Quirk
 In Memory of Clayton Rennie
 In Memory of Richard Rutherford
 In Memory of Michelle Sawyer
 In Honor of Todd Schaefer and Kathy Allen
 In Honor of William Shackelford
 In Honor of Lynn Stokesbary
 In Memory of Gwen Stumpf
 In Honor of Ungarna
 In Honor of Robert Wolfe
 In Honor of Chuck Woods

In Honor of Debbie Young and Tacoma Power Natural Resources

In-Kind

APCO Worldwide
 Audio Visual Meeting Solutions
 City of Tacoma
 Rene Claudio
 Karen Colbert
 Crosscut Public Media
 Gene Duvernoy and Carolyn Madsen
 EarthCorps
 Brian and Traci Janssen Foundation
 K&L Gates LLP
 Kasala
 Laura Marchbanks Photography
 Larisa Lumba
 John Malcomson
 Mithun
 The News Tribune
 Casey O'Connor posterGIANT, Inc.
 Premier Graphics
 Starbucks Coffee Company
 Starbucks, Leschi
 Tadpole Haven Native Plants
 Wilday Scott and Company
 Woodbrook Native Plant Nursery
 Zipcar

Matching Companies

Boeing Company Matching Gifts
 Boeing Employees Credit Union
 The Bullitt Foundation
 Expedia, Inc.
 Gates Foundation Matching Gifts Program
 GE Foundation
 Hancock Timber Resource Group
 Kraft Foods Foundation
 Lucky Seven Foundation
 Merrill Lynch & Co. Foundation
 Microsoft Matching Gifts Program
 MSNBC
 Nintendo of America Inc.
 Plum Creek Timber Company
 Puget Sound Energy
 Puget Sound Energy Foundation
 RealNetworks Foundation
 Regence Employee Giving Campaign
 REI
 Russell Family Foundation
 Russell Investments
 Russell Matching Gifts Program
 Symetra Financial
 UBS Foundation
 Union Bank Foundation
 United Way of King County
 US Bank

Legacy

Karl and Christine Anderson
 Virginia Anderson
 Sharon Baker
 Lucius and Nancy Biglow
 Peggy Bill and Stephen Sullivan
 Bruce and Kim Coe
 Priscilla Collins
 Michelle Connor and Mark Levensky
 Robert and Martha Cram
 Barbara Davidson
 Steve Durrant
 John Frederic
 Steven and Shirley Fuller
 Stanley and Marion Gartler
 Cheryl Germany
 Thelma and Charles Gilmur
 David and Melinda Gladstone

John and Margo Gooding
 Paul and Laura Gould
 Pamela Gross
 Barbara and Clayton Haberman
 Willa and Walter Halperin
 Jerry and Linda Henry
 Antonin and Sarka Hruby
 Anthony and Joanne Ishisaka
 Jane Clapp Living Trust
 Paul Kipper
 Charles D. Laird and Judy H. Shepherd
 John and Jayne Laird
 Michael Laird
 Teresa Lavender
 Carsten and Cristi Lien
 Roger Lowe
 Joan D. MacDonald
 Mimi MacDonald
 Avron Maletzky
 McDanel Land Foundation
 Jack and Barbara Miller
 Lloyd Morse
 Bill and Mary Ann Mundy
 Ernest and Dorothy Neville
 Nancy and Don Pearson
 Frank Pritchard
 Linda J. Pym
 Donald Robinson
 Tyrrell Rockafellar
 Jim Roush and Cynthia Wayburn
 David Russell
 John Sangster
 Tricia Scanlon
 Ruth Shimondle
 Hillary Shurtleff
 John Spehar
 Rich and Candy Stewart
 Donna Tait
 Sonia Thompson and Bruce Barnbaum
 Mark Tipperman and Lorna Williamson
 Diane E. Walkup
 Janet Wall
 Harrison and Melissa Watts
 Rich and Ruth Williams

Principal Sponsor

K&L GATES

Premier Sponsors



Leadership Sponsors



PHOTO CREDITS

Cover: Kristi Dranginis, Todd Parker, Metro Parks Tacoma
 Page 2: Todd Parker
 Page 3: Todd Parker
 Page 4: Erica Simek
 Page 5: Todd Parker, Keith Lazelle
 Page 6-7: Maury Island Ray Fortner
 Devil's Head Margot Cheel
 Copalis River CLC Staff
 I-90 CLC Staff
 Hoquiam Surge Plain Nicole Hill
 N. Fork Stillquamish Todd Parker
 Queets CLC Staff
 Cedar River Judy Blanco
 Conservation Box Ben Scott-Killian
 Page 8: People at work Chris Gilliland
 Stone Gossard Natalie Cheel
 Page 9: Nicole Woltersdorf
 Page 11: Matthew Simek, Todd Parker
 Page 17: Joanna Nelson
 Page 19: Alex Loong

FINANCIALS

* 31 Dec 2010

31 Dec 2009

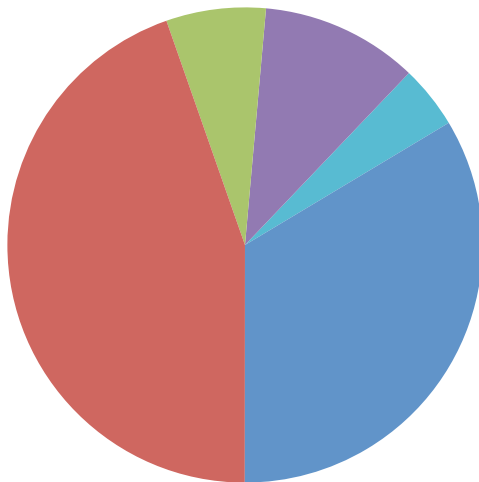
Current Assets	\$ 11,392,075	\$ 11,237,336
Conserved Land & Easements	24,109,896	21,412,485
Other Assets	405,646	565,189
TOTAL ASSETS	35,907,617	33,215,010

Current Liabilities	745,235	646,914
Long Term Liabilities	221,624	2,205,224
TOTAL LIABILITIES	966,859	2,852,138

Unrestricted Net Assets	26,958,162	21,197,471
Board Designated Net Assets	1,935,599	2,799,943
Temporarily Restricted Net Assets	5,236,867	5,608,539
Permanently Restricted Net Assets	810,130	756,919
TOTAL NET ASSETS	34,940,758	30,362,872

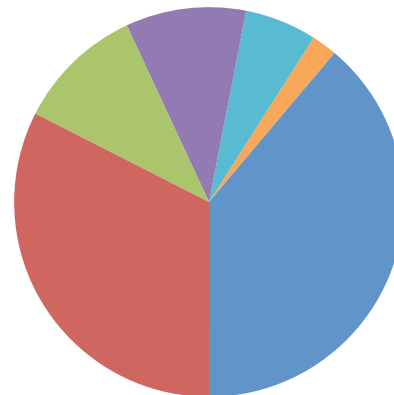
TOTAL LIABILITIES AND EQUITY	\$ 35,907,617	\$ 33,215,010
-------------------------------------	----------------------	----------------------

* Pending audit completion



OUR FUNDING

Philanthropic Revenue	34%
Government Grants & Contracts	45%
Other Project Revenue	7%
Sale of Land	11%
Other (investments, in-kind, misc.)	3%



OUR SPENDING

Acquisition of Land & Easements	39%
Conservation/Stewardship/Education	32%
Policy	11%
Management	10%
Fundraising	6%
Outreach & Marketing	2%

CONTACT US | info@cascadeland.org | www.cascadeland.org

KING COUNTY

615 2nd Avenue, Ste 600
Seattle WA 98104
Phone: (206) 292-5907
Fax: (206) 292-4765
info@cascadeland.org

KITTITAS COUNTY

409 North Pine Street
Ellensburg, WA 98926
Phone: (509) 962-1654
info@cascadeland.org

OLYMPIC PENINSULA

PO Box 138
105 Hudson Street
Port Townsend, WA 98368
Phone: (360) 379-4831
info@cascadeland.org

PIERCE COUNTY





1119 Pacific Avenue
Suite 1300
Tacoma WA 98402
Phone: (253) 274-4955
info@cascadeland.org

NEW LEAF PAPER®
ENVIRONMENTAL BENEFITS STATEMENT
of using post-consumer waste fiber vs. virgin fiber

The Cascade Land Conservancy's 2010 Community Report saved the following resources by using 700 pounds of Imagination (FSC), made with 100% recycled fiber and 100% post-consumer waste, processed chlorine free, designated Ancient Forest Friendly™ and manufactured with electricity that is offset with Green-e® certified renewable energy certificates.

trees	water	energy	solid waste	greenhouse gases
9 fully grown	4147 gallons	3 Million BTUs	252 pounds	861 pounds

Calculations based on research by Environmental Defense Fund and other members of the Paper Task Force.
www.newleafpaper.com



The Cascade Land Conservancy is the first land trust in the state to be accredited by the Washington, D.C.-based Land Trust Alliance.